

# 肺癌放疗计划设计一例

山东省肿瘤医院 物理室

陈进琥 尹勇 卢洁

2010.8 北京

*Shandong Tumor Hospital*

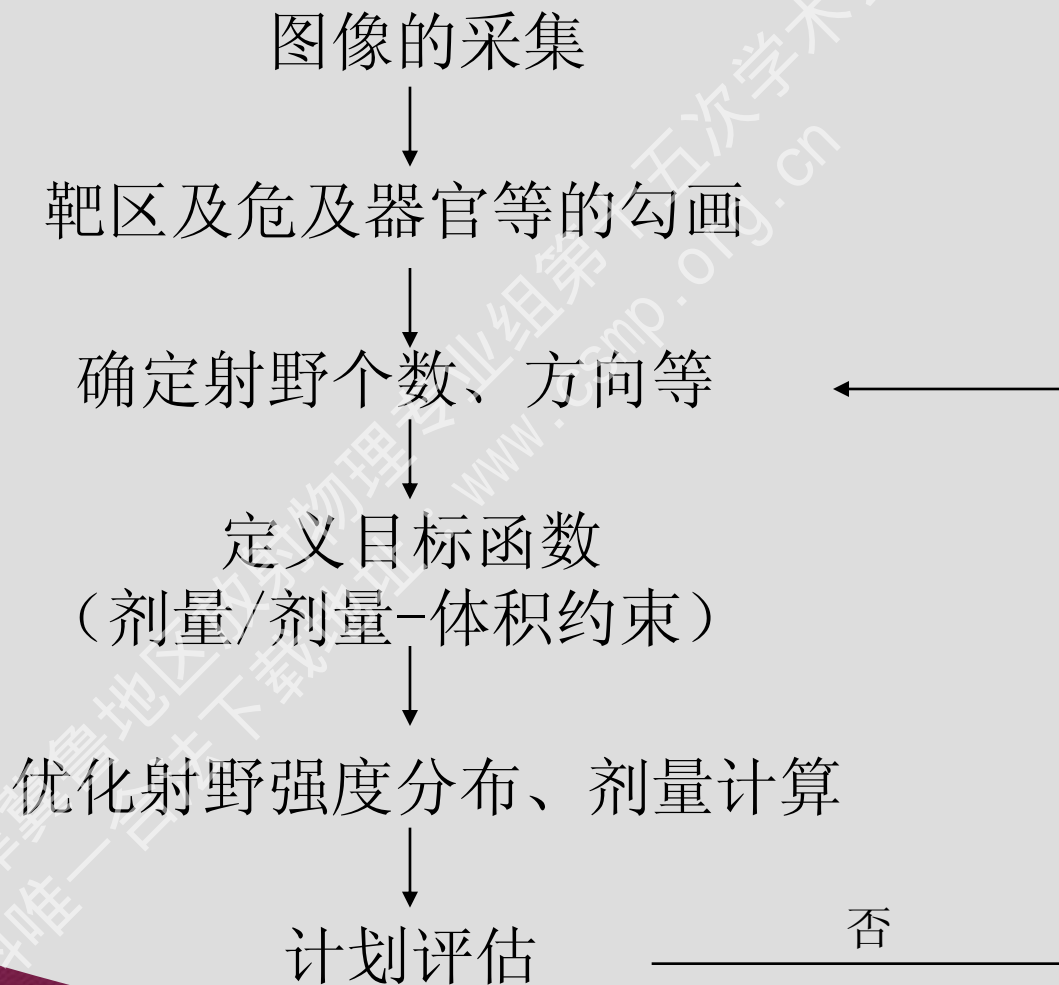
2010京津冀鲁地区放射物理专业学术研讨会  
第五次学术会议  
www.csmhp.org.cn  
本资料唯一合法下载地址

# 计划概述

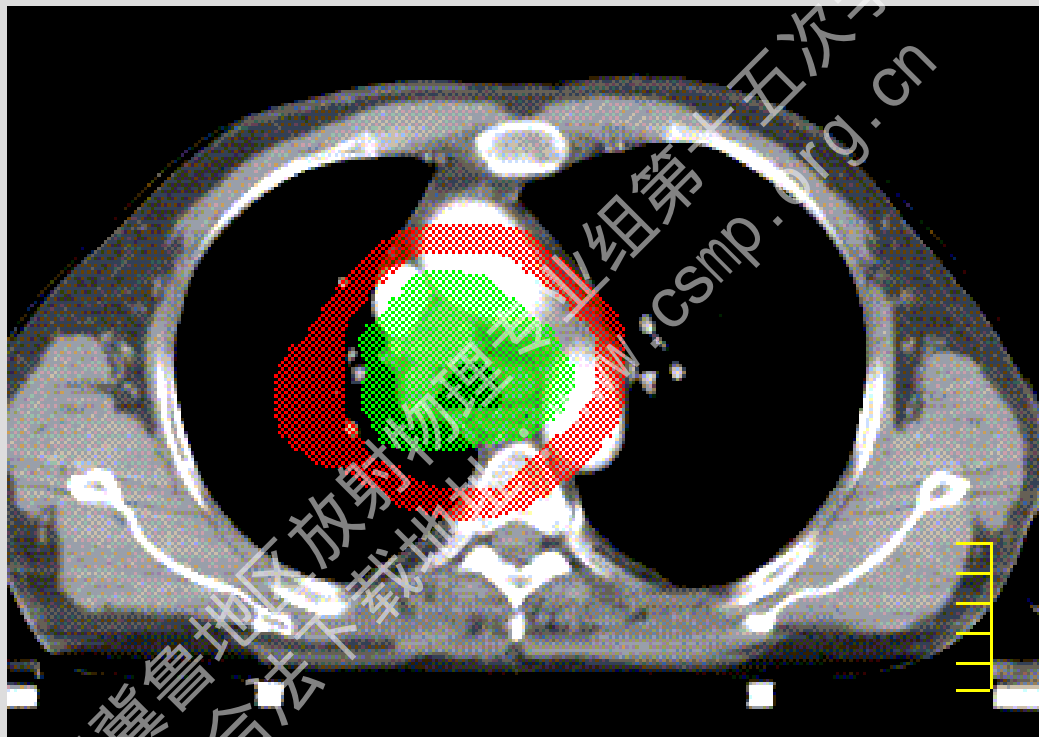
- 计划系统：Pinnacle<sup>®</sup> version 8.0m
- 加速器：Varian Trilogy, 120片 MLC
- 计划设计：IMRT (step and shoot)  
6MX  
5个射野（角度均分）

# 计划概述

## 计划流程

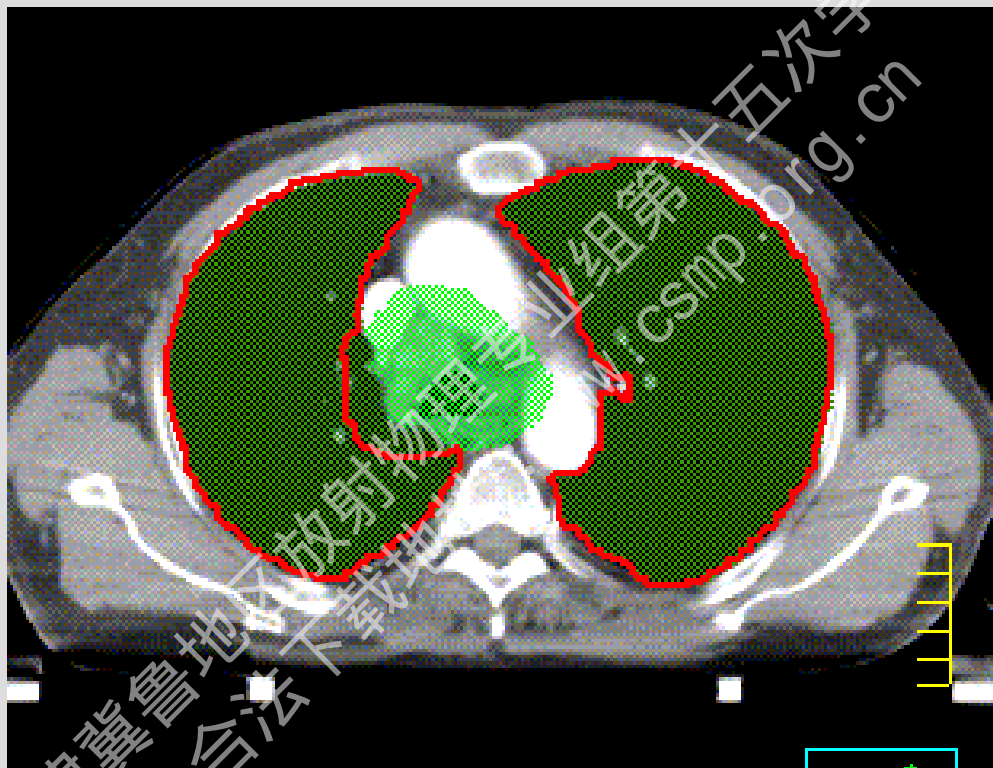


# 自定义ROI



ring

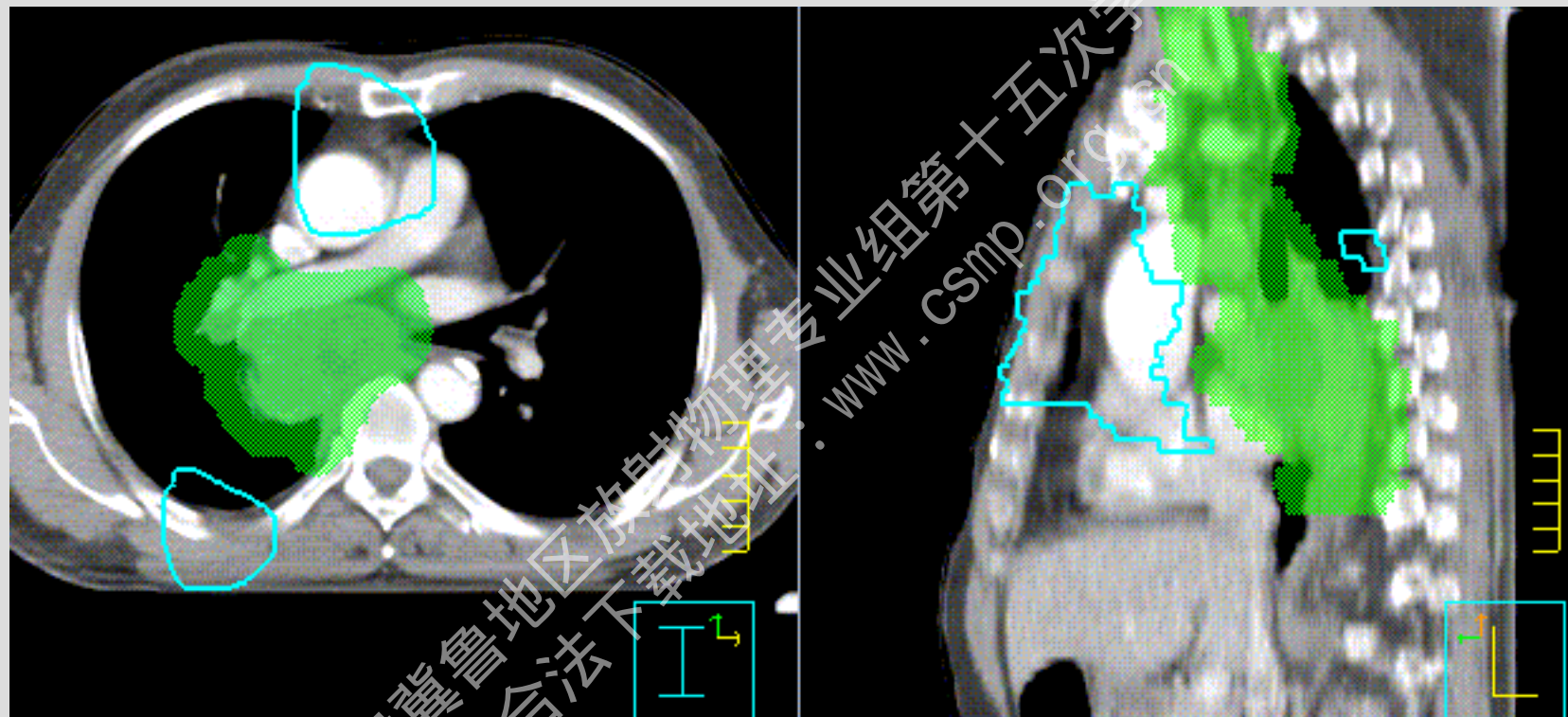
# 自定义ROI



TL-PTV



# 自定义ROI



hot

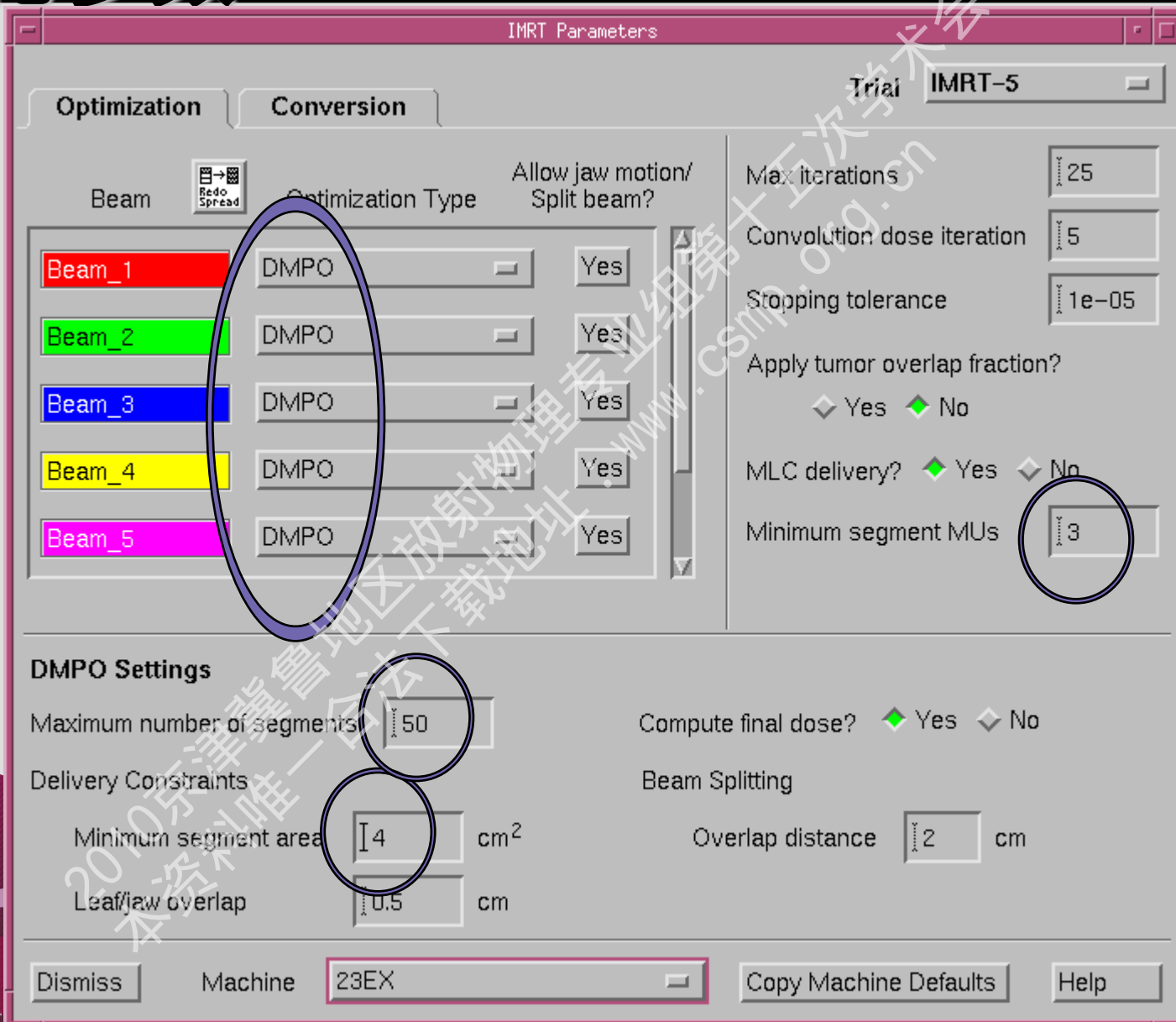
# 计划要求

Shandong Tumor Hospital

- 靶区处方: 60Gy / 30fraction, 满足95%的PTV
- Lung all: V20 < 28-30%
- Cord: max dose < 45Gy
- Heart: V30 < 40%, V40 < 30%

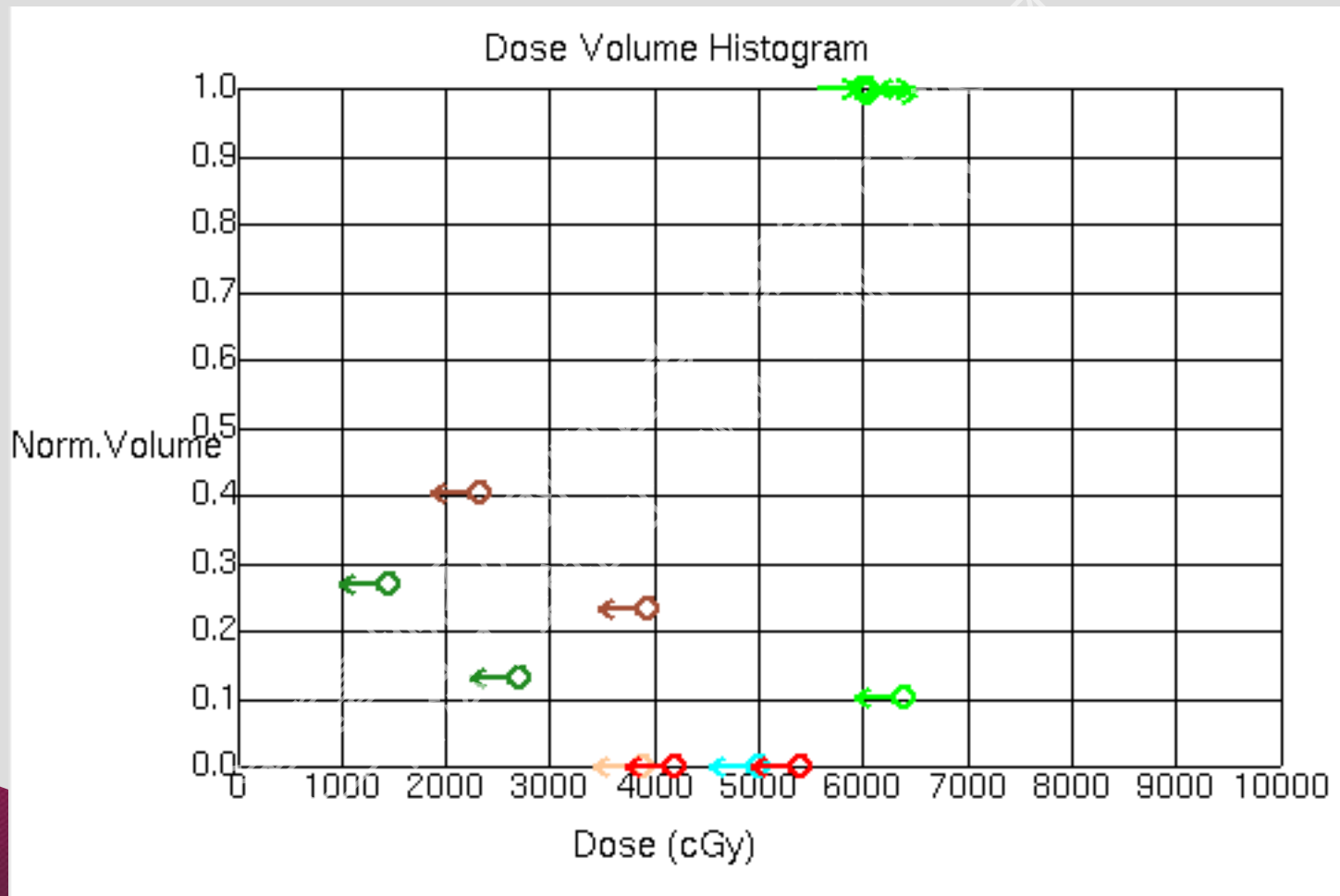
2010京津冀鲁地区放射物理专业组第十五届学术年会  
本资料唯一合法下载地址: www.csmp.org.cn

# 优化参数





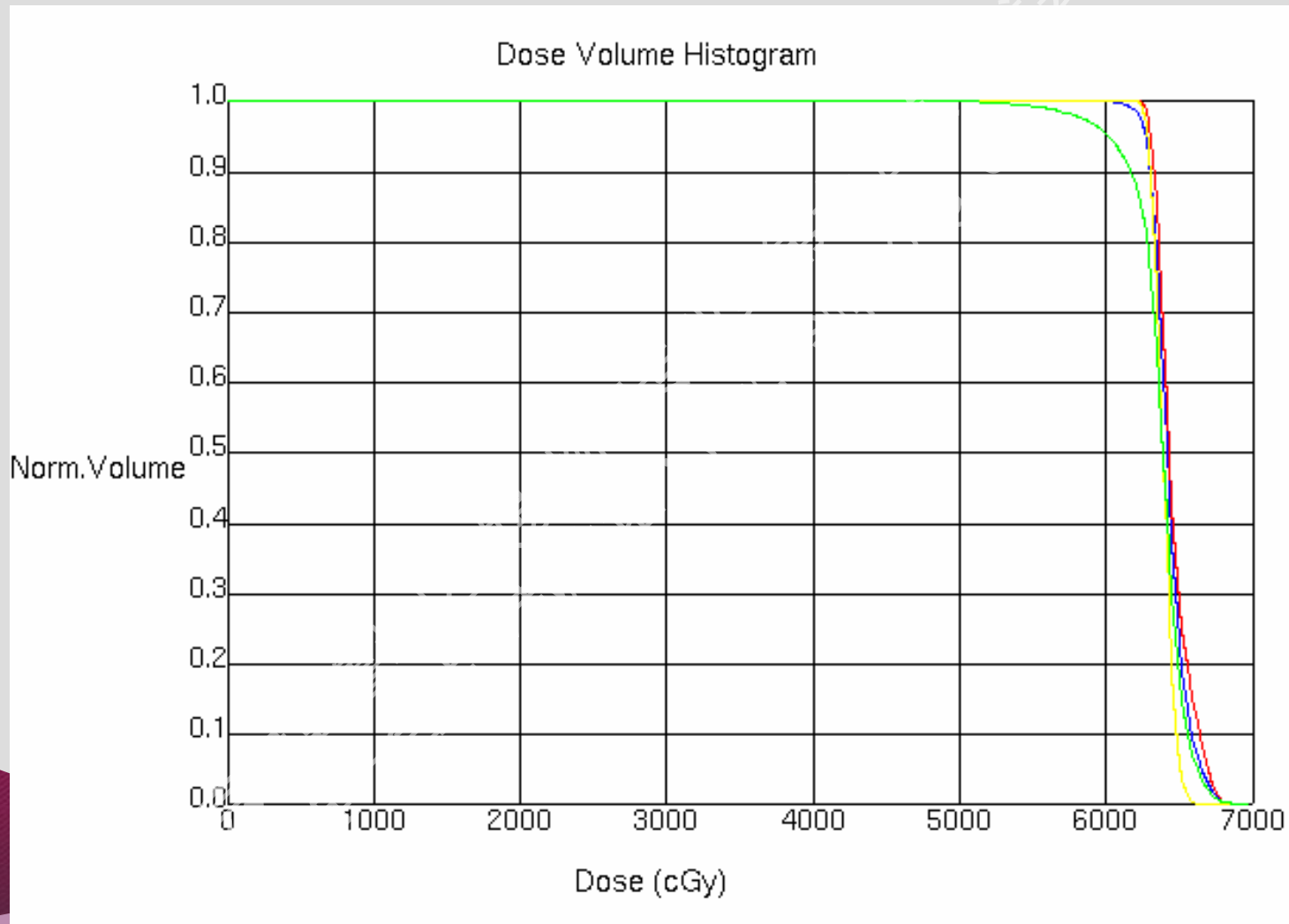
# 优化参数



# 优化参数

ROI	Parameter	Dose	Volume	Weight
PTV	uniform dose	6000		90
PTV	min DVH	6000	95	100
PTV	min dose	5820	100	100
PTV	max DVH	6300	5	80
cord	max dose	3900		50
cordPRV_3mm	max dose	4100		20
heart	max DVH	3000	35	10
heart	max DVH	4000	22	10
TL-PTV	max DVH	2000	20	30
TL-PTV	max DVH	3000	10	20
ring	max dose	4500		5
hot	max dose	5000		15

# 优化结果



PTV, GTV, CTV, GTVnd

# 优化结果

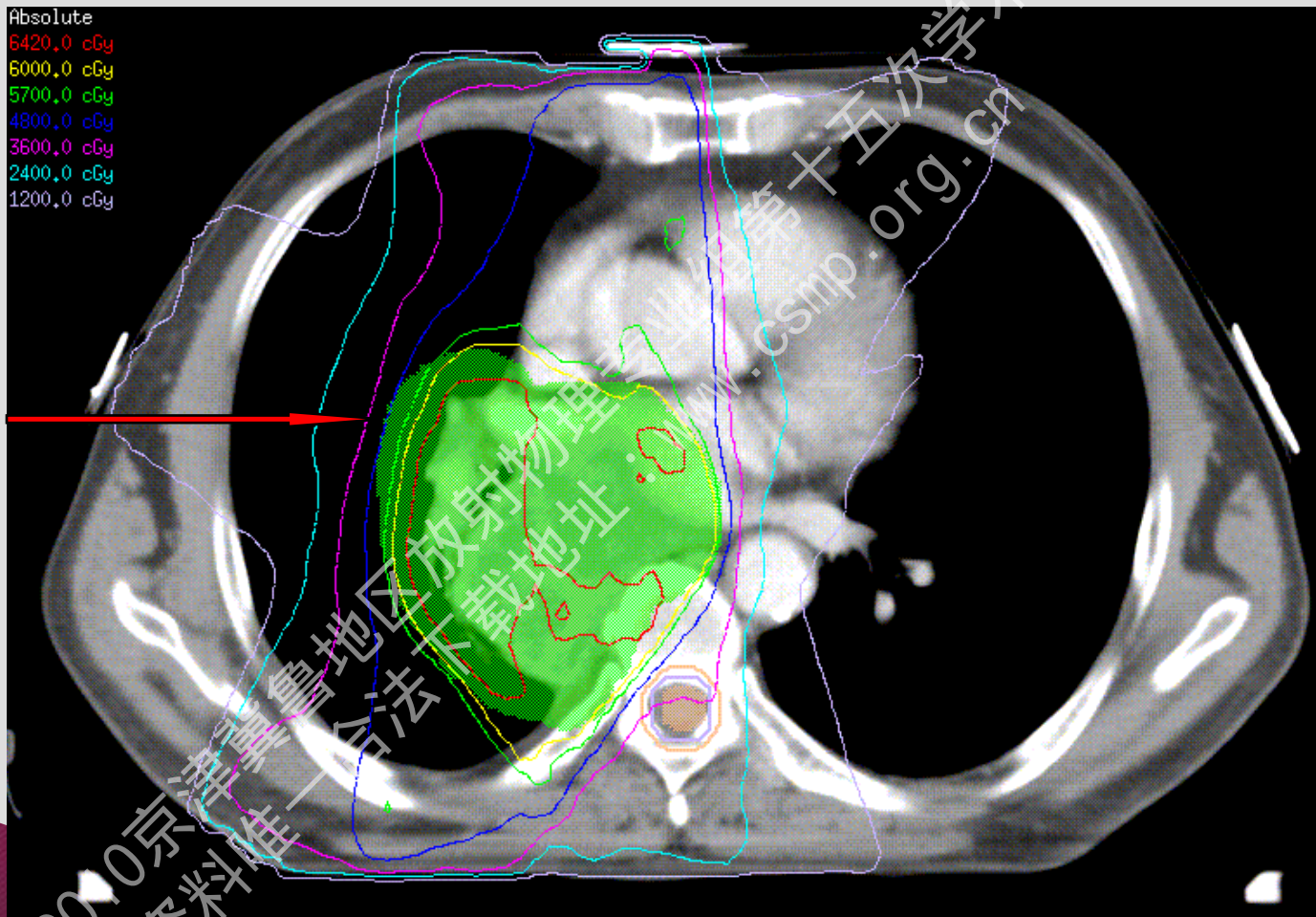
			Min	Max	Mean		
◇	—	CTV	IMRT-5	5428.3	6855.4	6427.6	116.1
◇	—	GTV	IMRT-5	8199.5	6855.4	6454.1	116.2
◆	—	GTVnd	IMRT-5	8103.6	6589.3	6387.5	67.2
◇	—	PTV	IMRT-5	4246.2	6855.4	6360.4	206.2

PTV:  $698.99\text{cm}^3 / 734.72\text{cm}^3 * 100\% = 95.1\%$

CI =  $V_{t,ref} / V_t * V_{t,ref} / V_{ref} = 0.856$

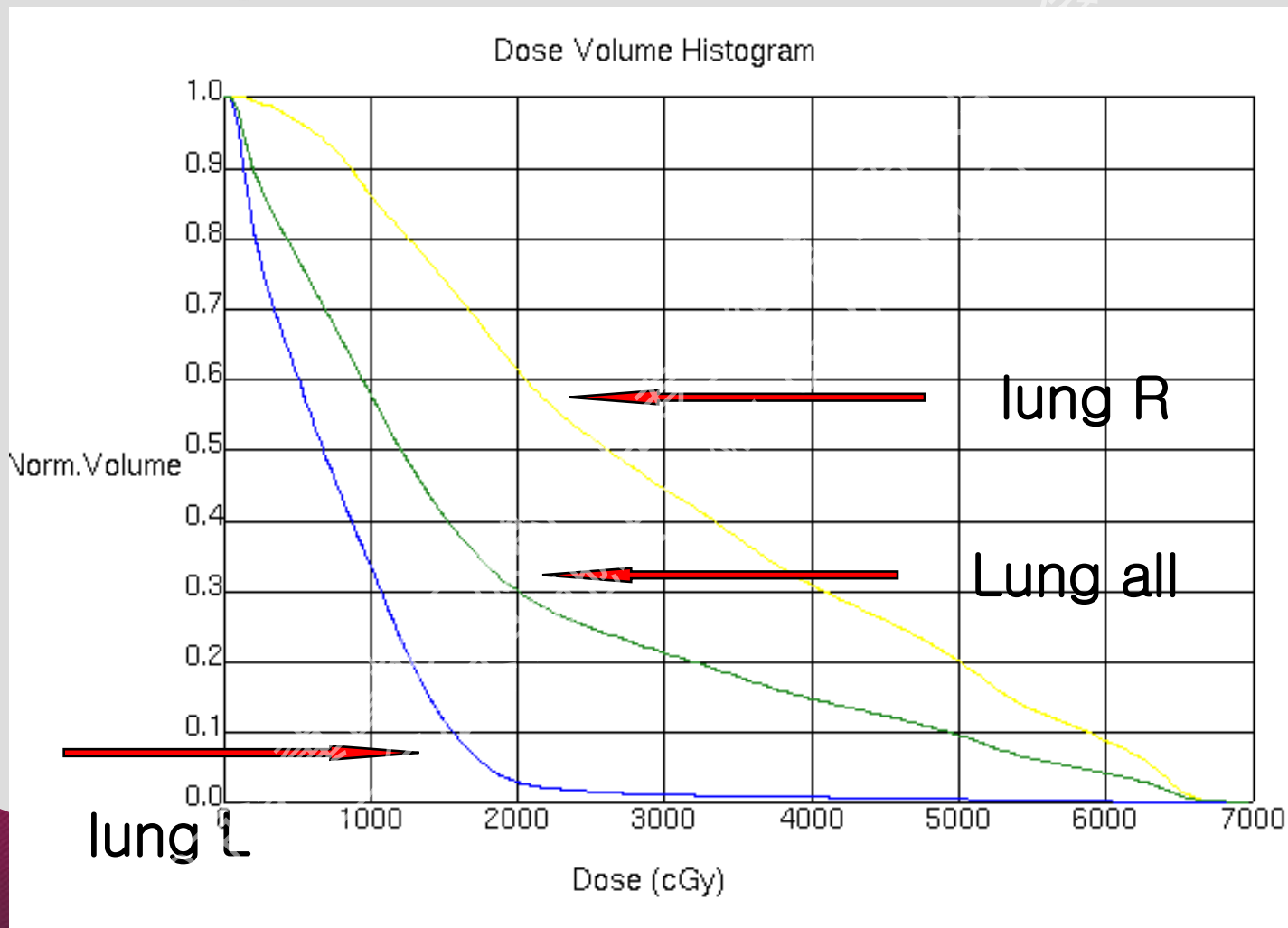
HI =  $D_5 / D_{95} = 6618 / 6000 = 1.103$

# 优化结果



2010京海鲁地区放射物理专业委员会第十五次学术会议  
www.sd-tumor.org.cn

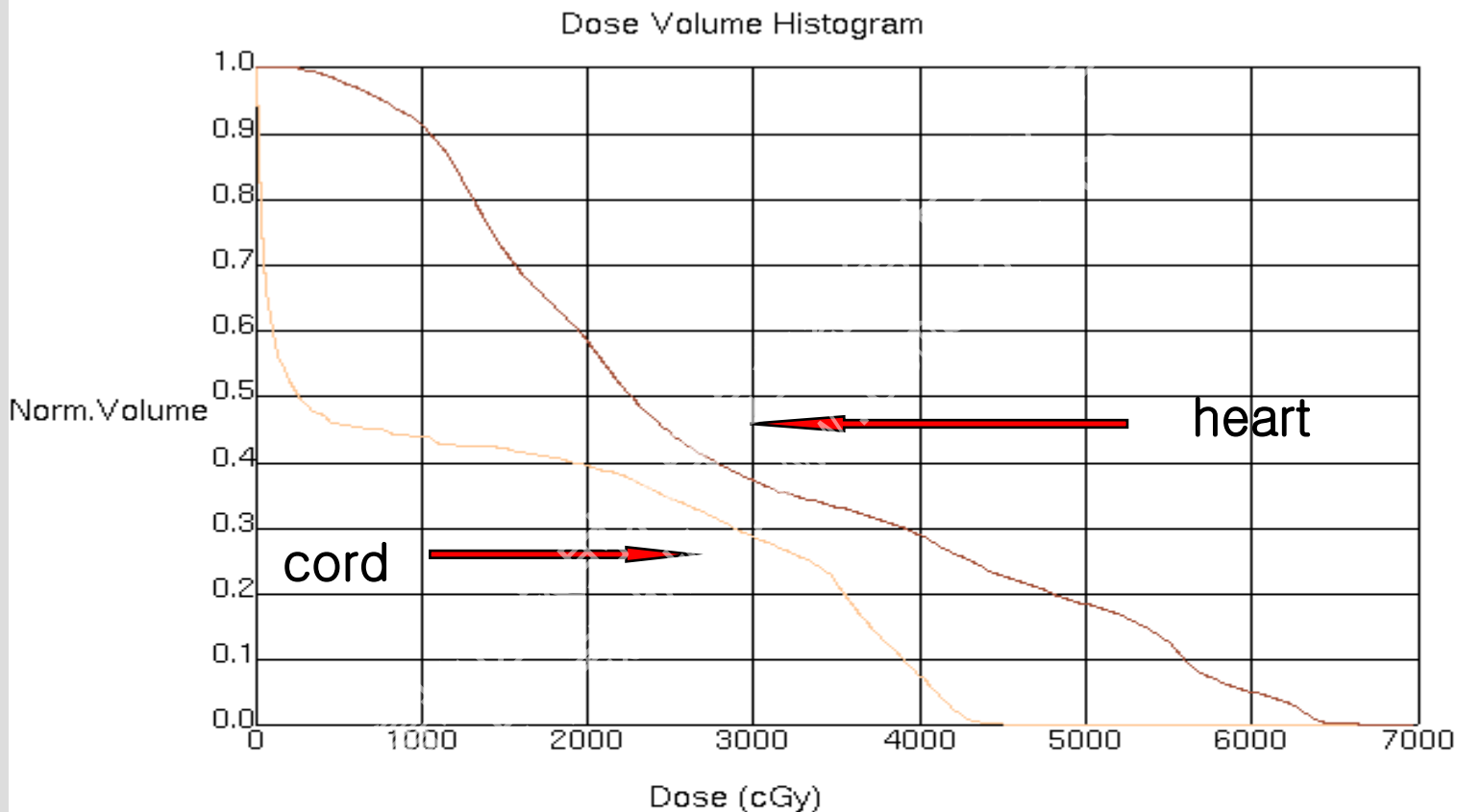
# 优化结果



$$V_{20} = 990.4 \text{ cm}^3 / 3318.5 \text{ cm}^3 = 29.8\%$$



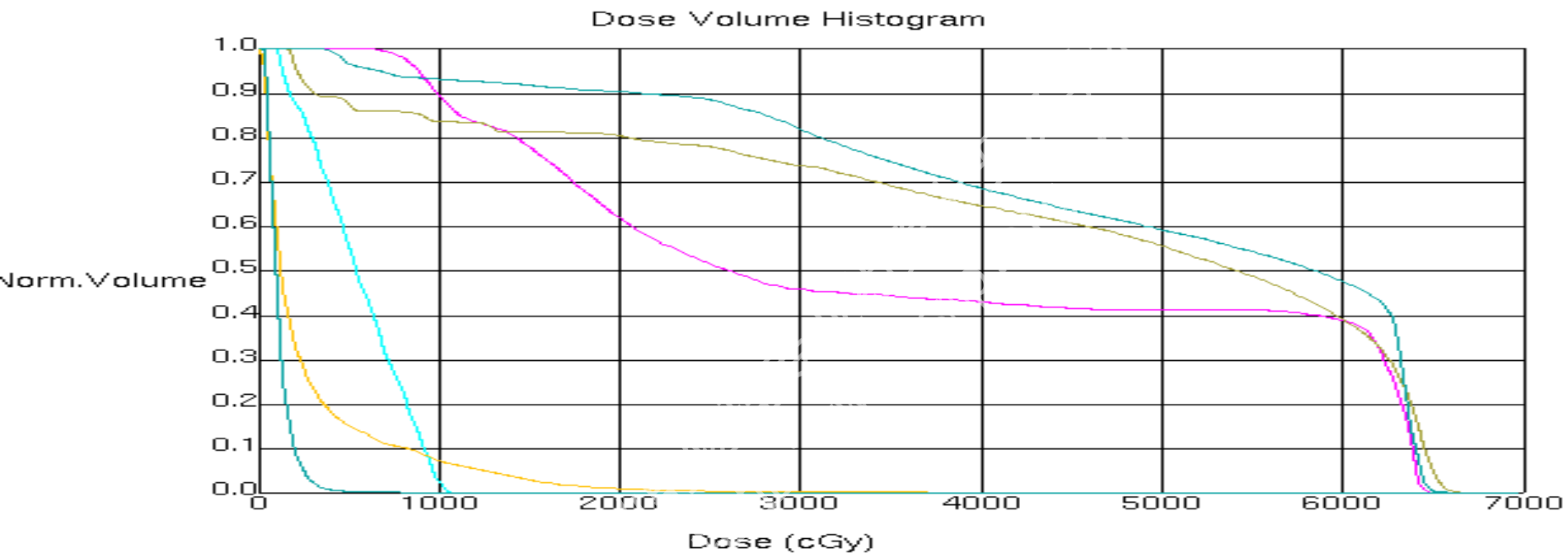
# 优化结果



## ROI Statistics

Line Type	ROI	Trial	Min.	Max.	Mean	Std. Dev.	% Out
◇	Cord	IMRT-5	0.5	4491.3	1465.9	1640.1	0.0
◇	Heart	IMRT-5	216.4	6624.8	2850.1	1725.2	0.0

# 优化结果



ROI Statistics

Line Type	ROI	Trial	Min.	Max.	Mean	Std. Dev.	% Ou
	Brachial plexus_L	IMRT-5	114.4	1056.9	553.7	261.2	0.0
	Brachial plexus_R	IMRT-5	572.9	6475.1	3653.1	2282.3	0.0
	Esophagus	IMRT-5	168.4	6645.7	4397.1	2240.3	0.0
	Liver	IMRT-5	21.9	3687.5	284.8	406.9	0.0
	Stomach	IMRT-5	31.9	784.2	115.7	67.2	0.0
	Trachea	IMRT-5	338.6	6584.3	4836.0	1848.0	0.0

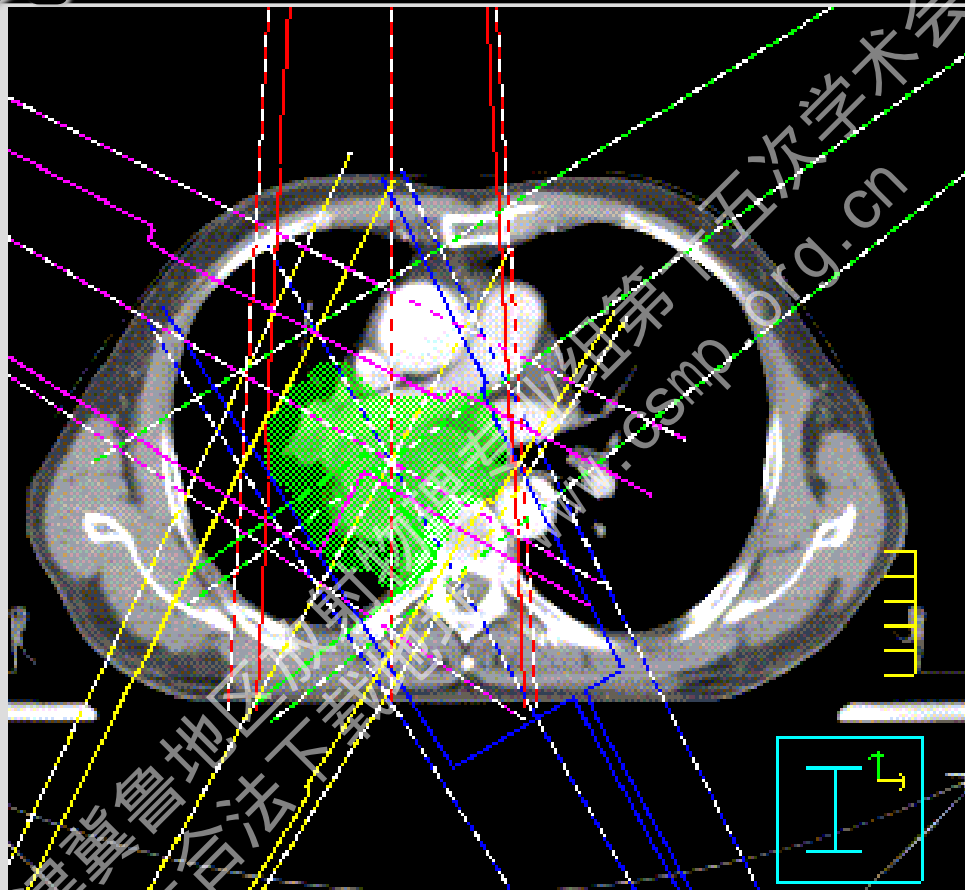
# 优化结果

Shandong Tumor Hospital

- 子野数： 48个
- 总MU： 521

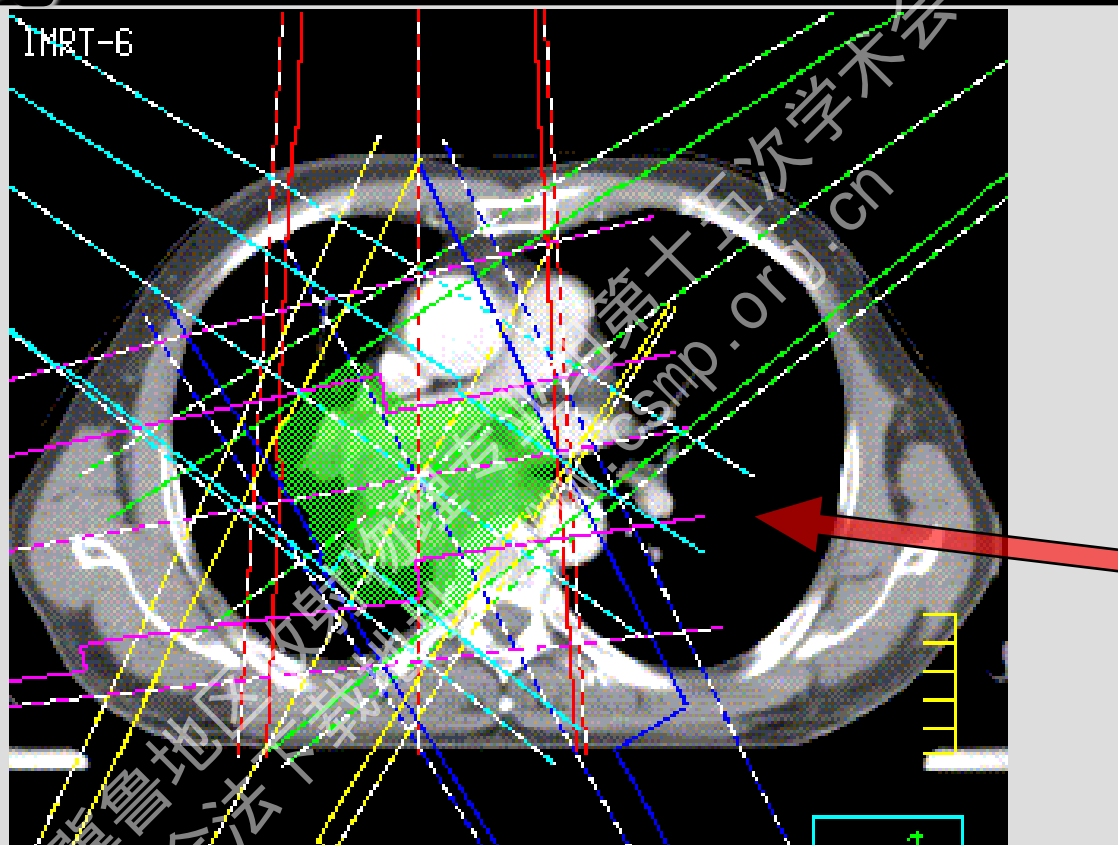
2010京津冀鲁地区放射物理专业组第十五次学术会议  
本资料唯一合法下载地址：[www.csmp.org.cn](http://www.csmp.org.cn)

# 计划对比



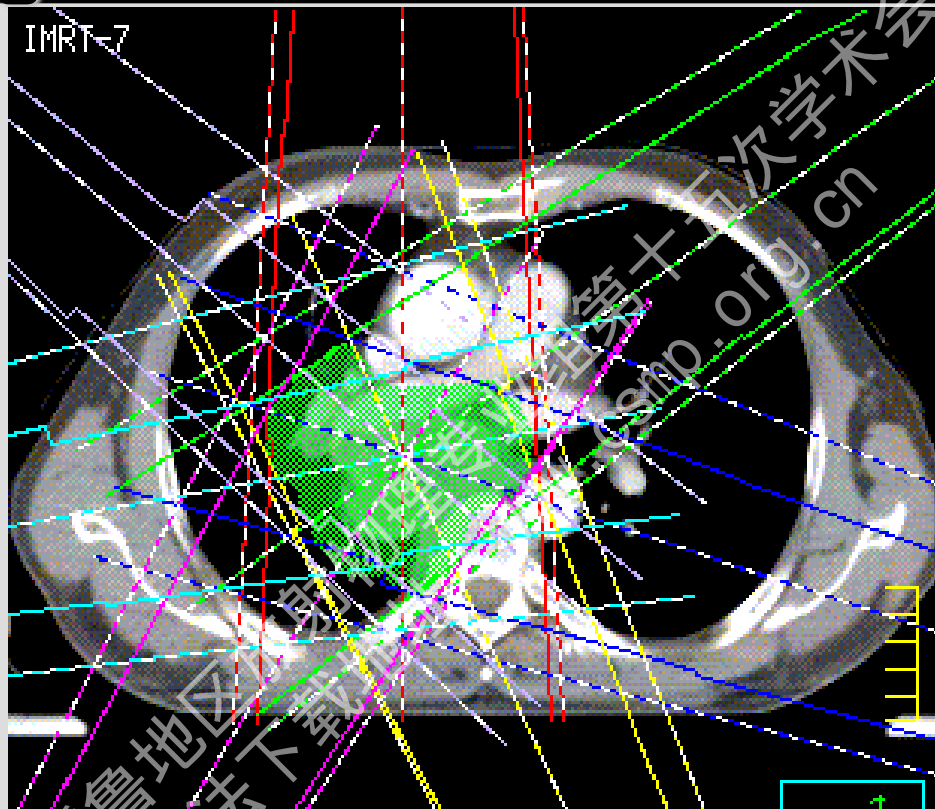
IMRT-5: 5个射野角度均分

# 计划对比



IMRT-6: 在7个射野角度均分的基础上，撤销横穿健侧肺的射野

# 计划对比



IMRT-7: 7个射野角度均分



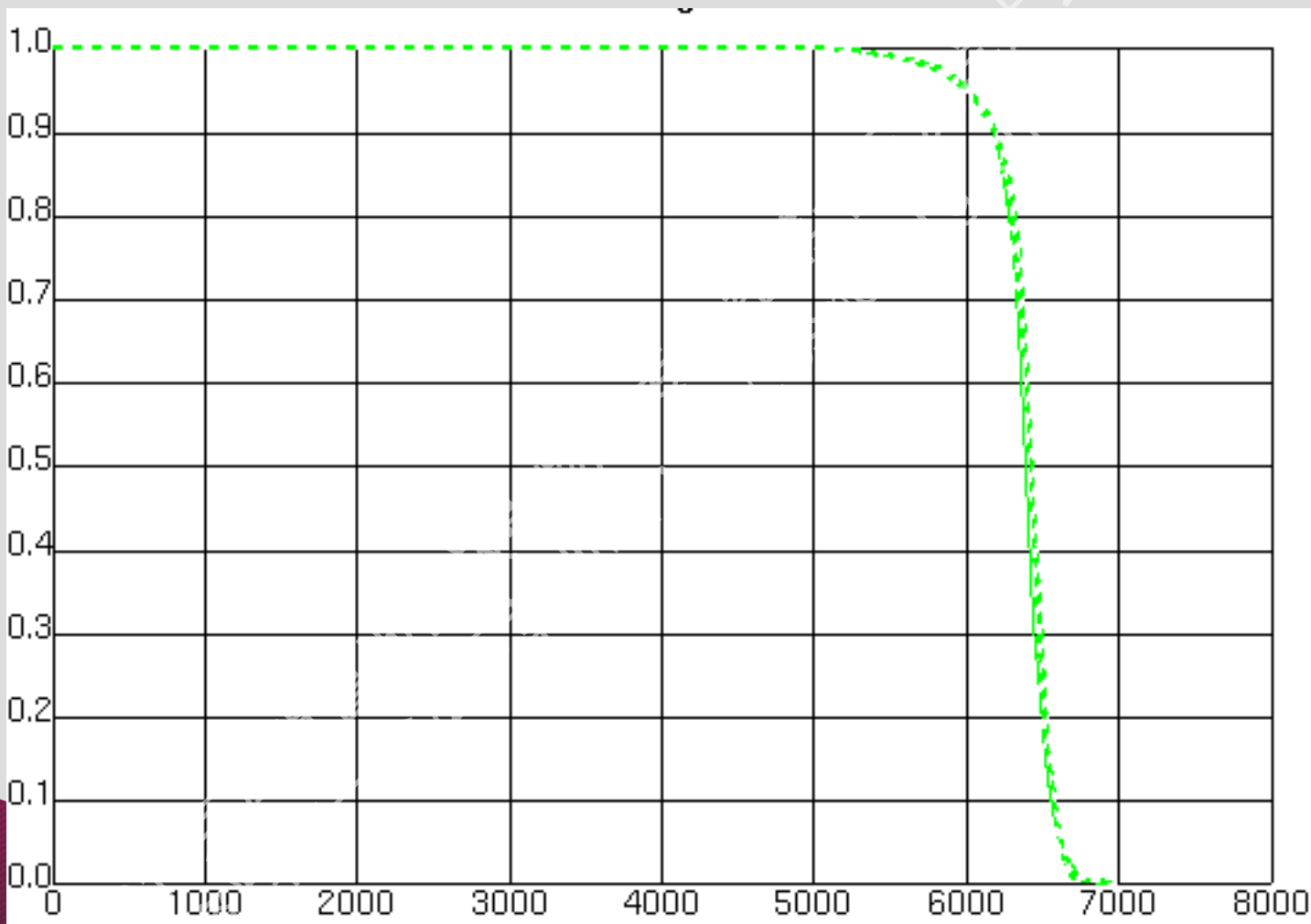
# 计划对比

Shandong Tumor Hospital

- 三个计划的机器参数相同
- 调整优化参数使之均达到目标参数要求

2010京津冀鲁地区放射物理专业委员会第十五次学术会议  
本资料唯一合法下载地址: www.sd-tumor.org.cn

# 计划对比



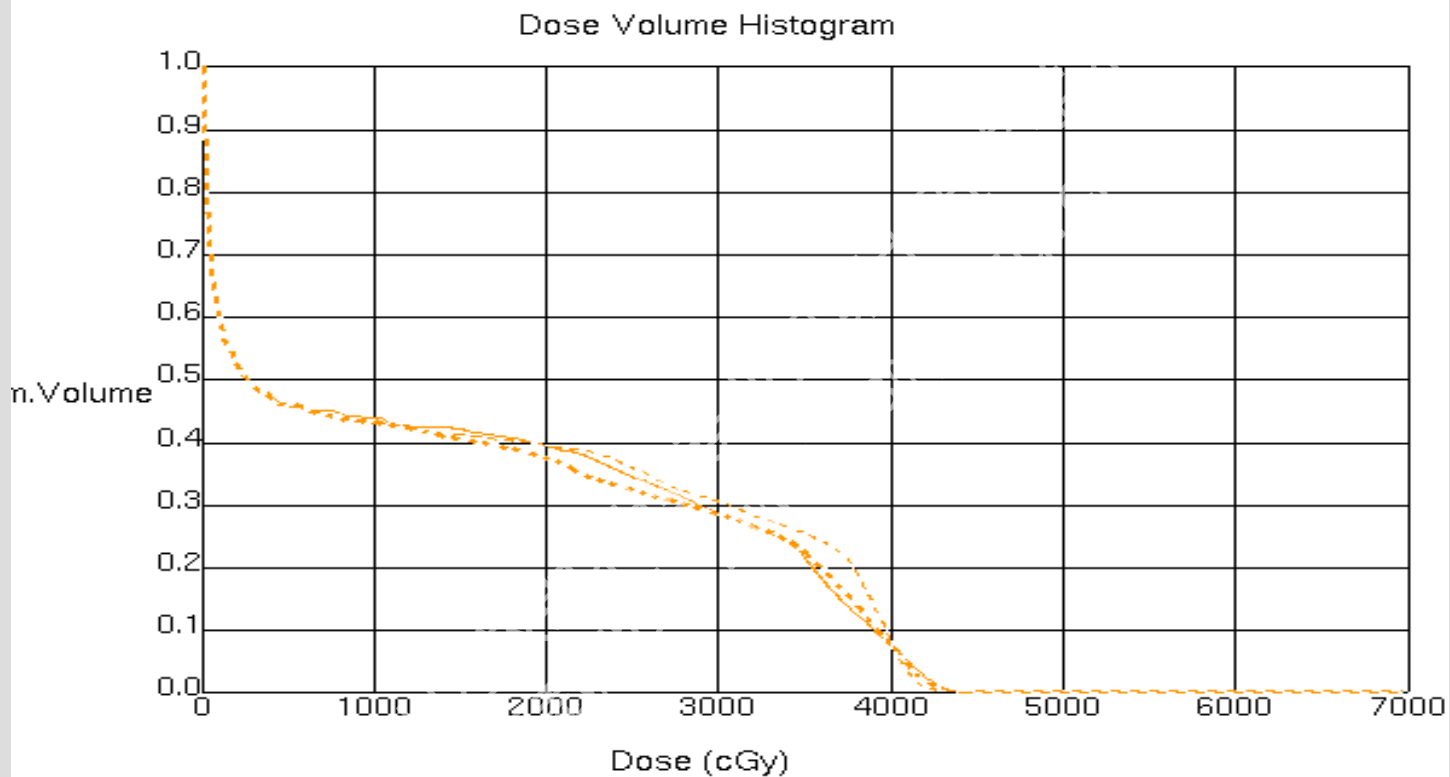
PTV




# 计划对比

Shandong Tumor Hospital

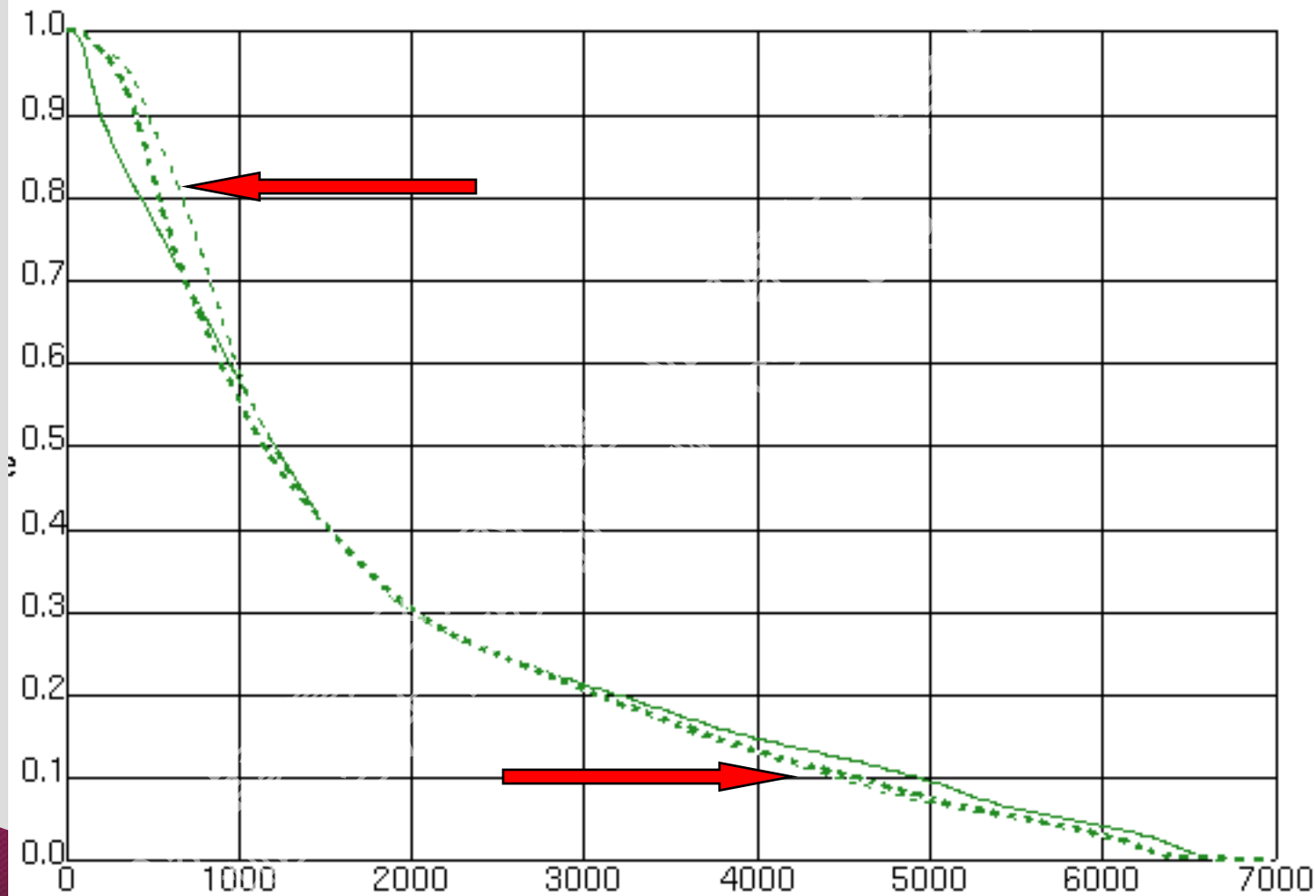
	PTV	CI	HI
IMRT-5	95.1%	0.856	1.103
IMRT-6	95.3%	0.867	1.102
IMRT-7	95.4%	0.872	1.102

# 计划对比



ROI Statistics								% C
Line Type	ROI	Trial	Min.	Max.	Mean	Std. Dev.		
	Cord	IMRT-5	0.5	4491.3	1465.9	1640.1	0	
	Cord	IMRT-6	0.5	4404.7	1437.6	1635.5	0	
	Cord	IMRT-7	0.5	4437.1	1501.3	1690.2	0	

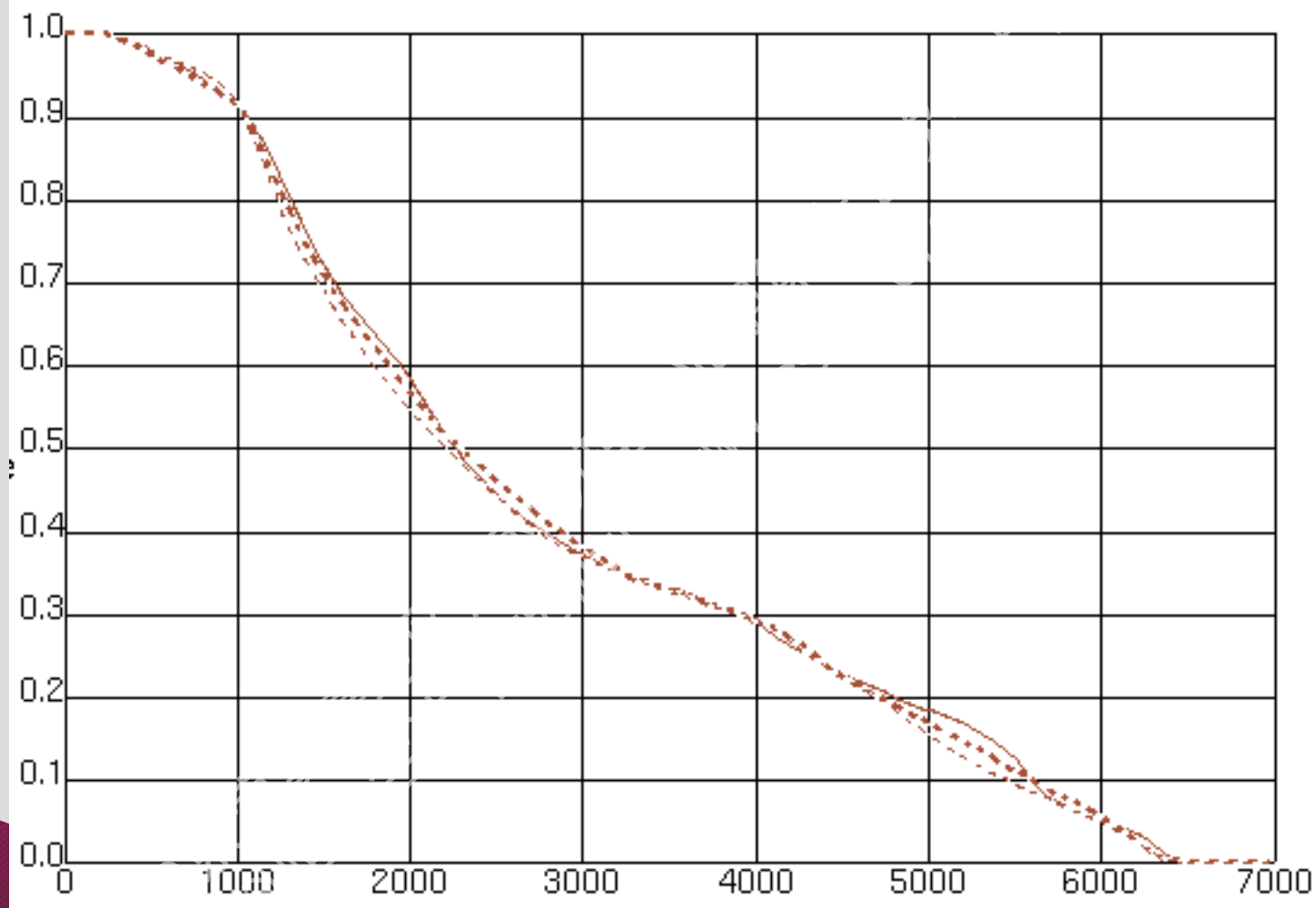
# 计划对比



2011  
本资料

Lung all

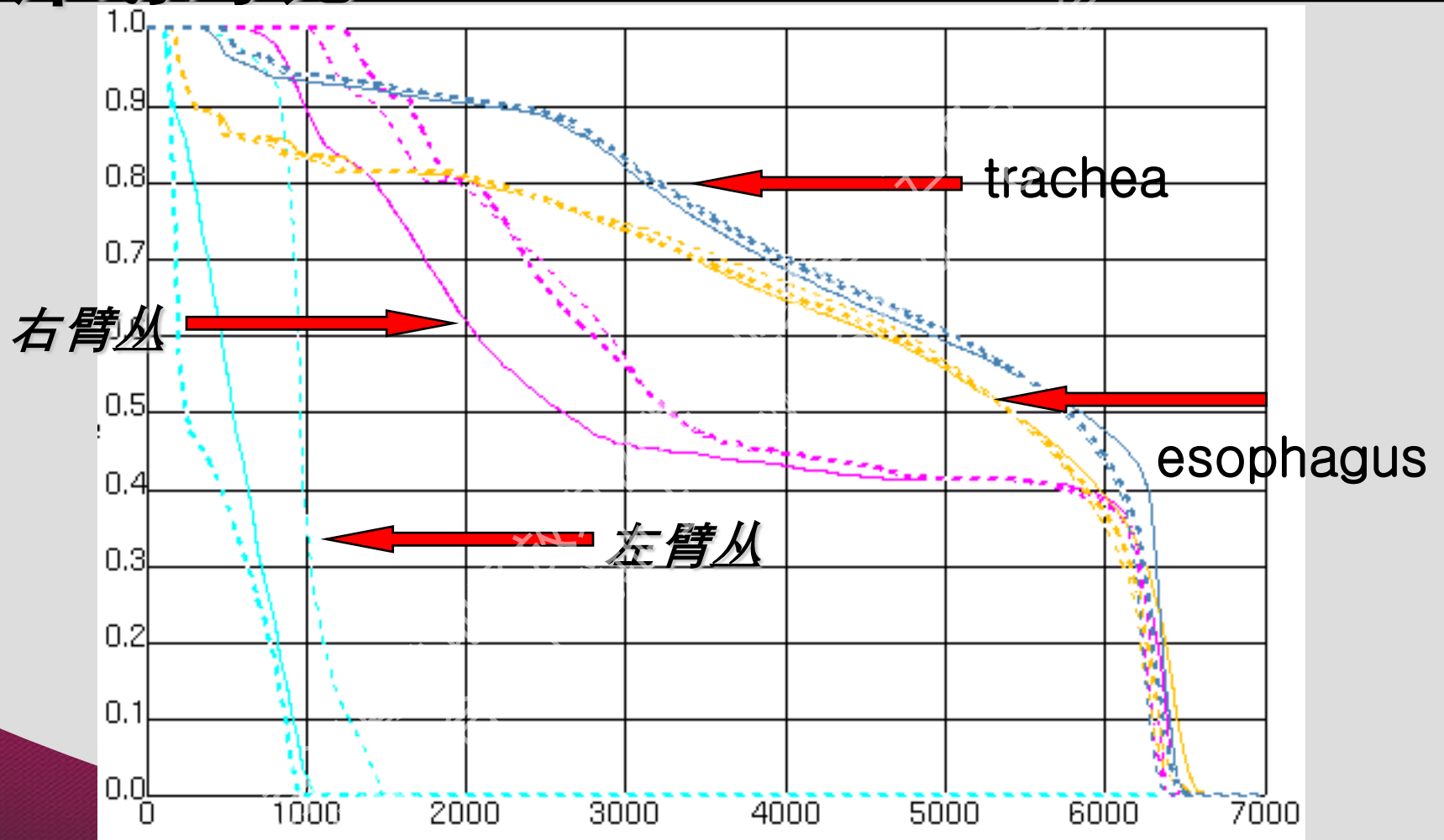
# 计划对比



heart



# 计划对比



2011  
本资料

# 计划对比

- 子野数：IMRT-5 为48个  
IMRT-6 为50个  
IMRT-7 为49个
- 总MU：IMRT-5 为521  
IMRT-6 为497  
IMRT-7 为525

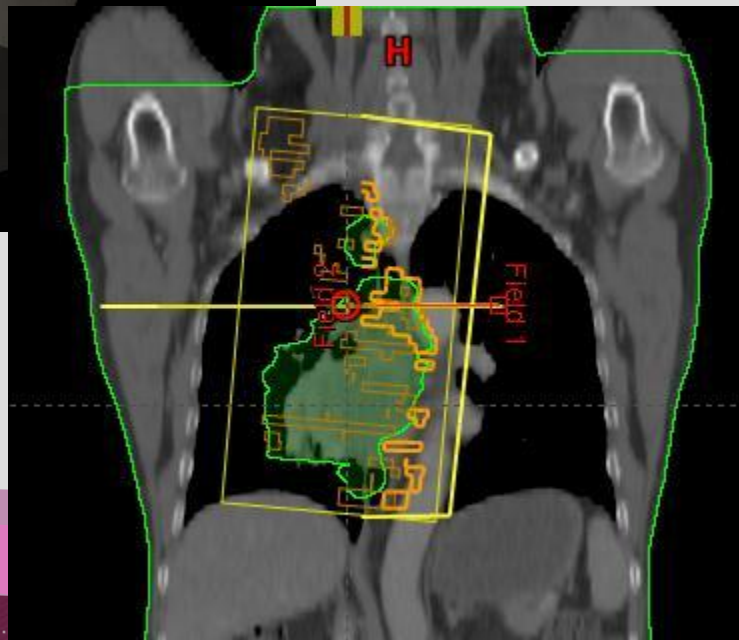
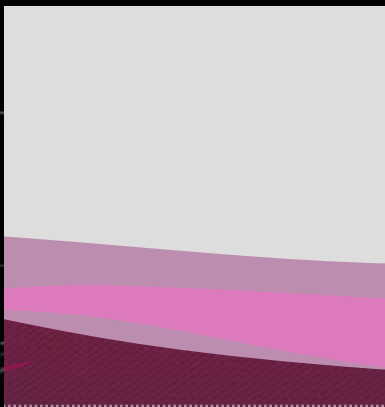
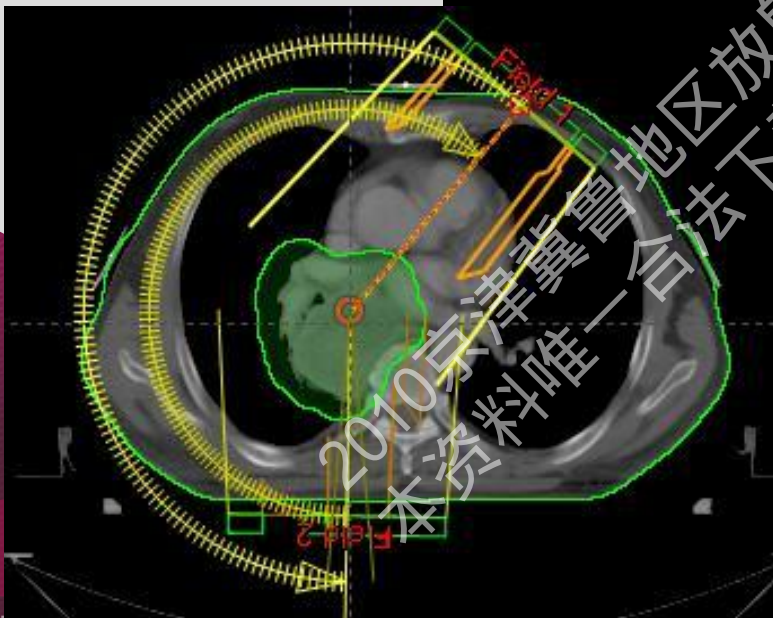
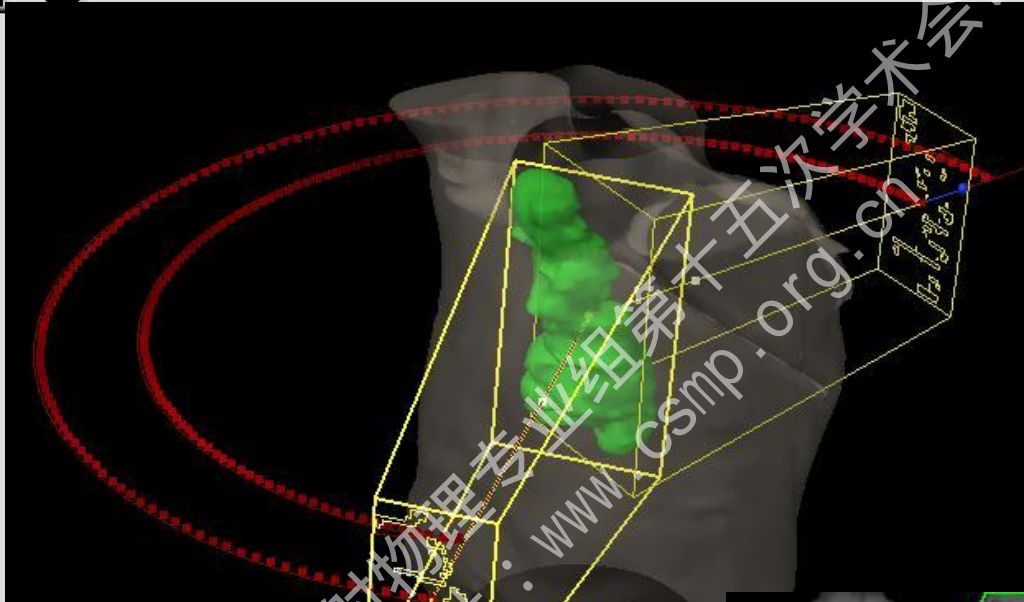
- 三个IMRT计划均能达到计划目标要求
- 随着射野数增加，靶区的剂量要求更容易达到
- 由于三个计划子野数与总MU数相差无几，可以排除叶片漏/穿射剂量的影响，观察到肺受到低剂量照射的体积随着射野数增加而增加
- 胸部5野IMRT计划相对能在一定程度上降低OAR的受量，减少治疗时长和病人费用

# 肺癌的RapidArc计划

2010京津冀鲁地区放射物理专业委员会第十五次学术会议  
本资料唯一合法下载地址：[www.sd-tumor.org.cn](http://www.sd-tumor.org.cn)

# RapidArc

Shandong Tumor Hospital

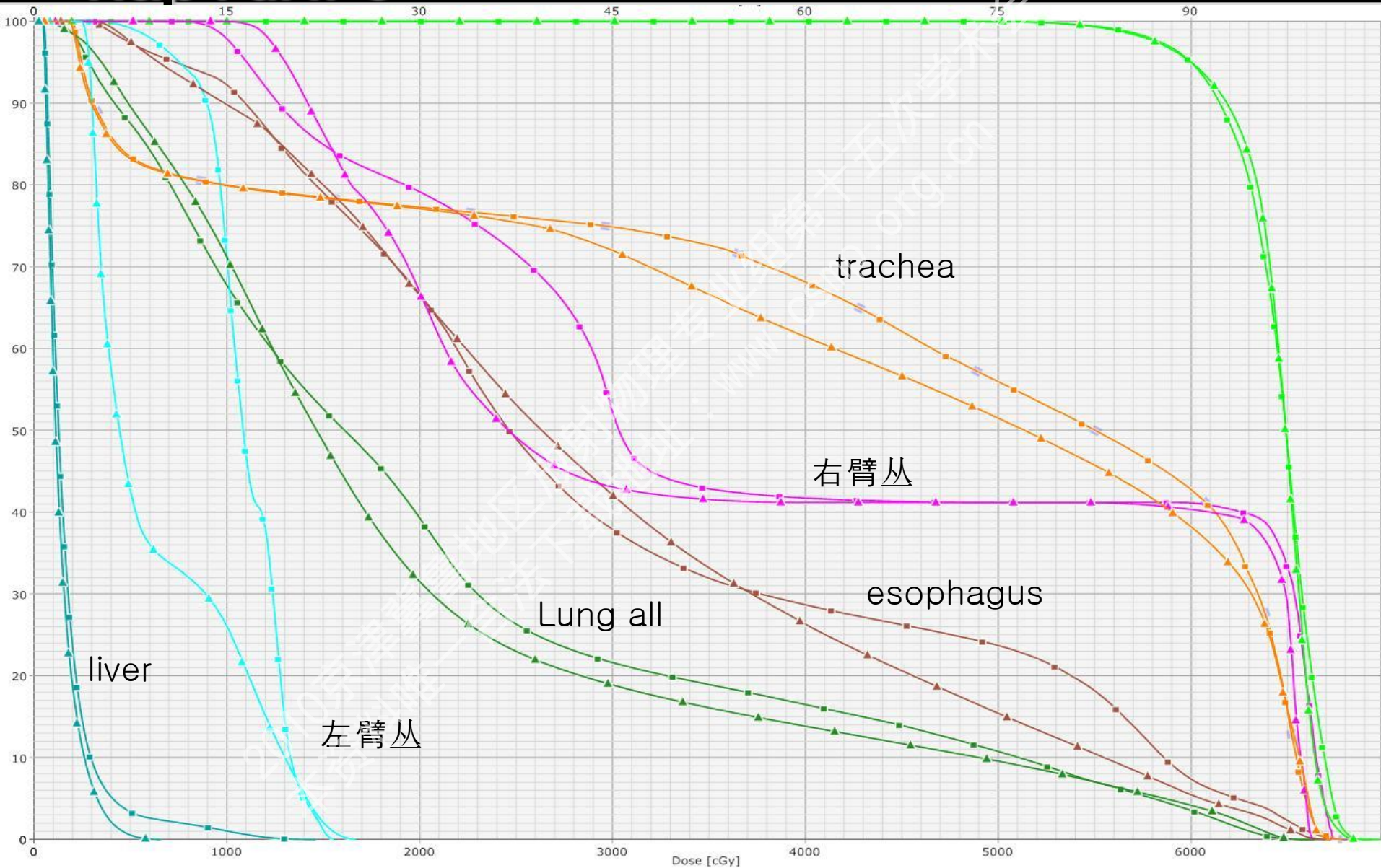


- RapidArc计划设计：  
Varian Trilogy加速器， 6MX  
两个部分旋转射野： $40^{\circ}-181^{\circ}/181^{\circ}-40^{\circ}$   
Collimator:  $5^{\circ}/355^{\circ}$   
Max dose rate: 600MU/min
- IMRT: 5个固定野， 6MX  
400MU/min  
Step and Shoot



# RapidArc

Shandong Tumor Hospital



- 总MU: RapidArc为686, IMRT为1093
- Control Point: RapidArc为254, IMRT为464
- 估计治疗时长: RapidArc为1.73min, IMRT >10min
- CI: RapidArc为0.882, IMRT为0.814
- HI: RapidArc为1.114, IMRT为1.122

- RapidArc计划无论是对于靶区还是OAR,均具有剂量学优势
- RapidArc应用动态调强技术, AAA算法, DAO优化算法, 使之具有较高施照效率
- RapidArc计划优化时长是IMRT的4-6倍
- 胸部肿瘤应用RapidArc可能造成肺组织低剂量区升高。



# 谢谢



济兗路440号